



SYMPHONY-SP™

WIDEBAND (617-6000MHZ) DIRECTIONAL MIMO VENUE ANTENNA



- Flagship directional antenna for stadiums & high capacity venues
- MIMO with dual-polarization and minimal sidelobes
- Continuous wideband coverage across all sub-6GHz cellular and WiFi bands; enabling 5G and future-proofing your system
- Fraction of the size and weight of other solutions

APPLICATIONS

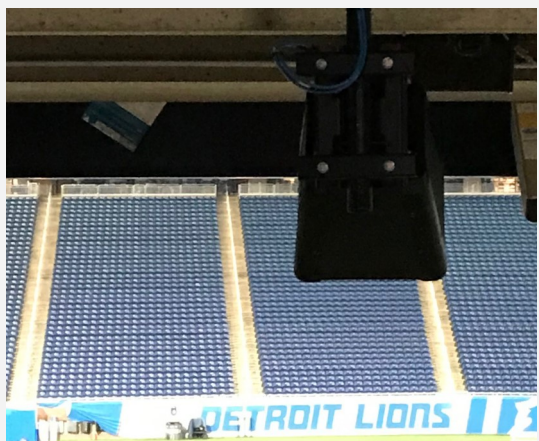
- Stadium and Venue DAS
- Single & Multi-Carrier Systems
- Microcells & Metrocells

THE FRACTAL ADVANTAGE™

- Super-wide bandwidth for essentially all frequency applications in single antenna
- “Future proof” design ready for LTE, 5G, CBRS, LAA, C-band
- Excellent RF performance with ultra-wide bandwidth
- Smallest form factor for given performance on the market
- **Made in USA** of US and imported parts

FREQUENCY-DEPENDENT SPECIFICATIONS

Frequency (MHz)	617-896	1695-2200	2200-2700	3550-3700	3700-4000	5150-5925
Peak Gain (dBi)	10.0	13.9	14.4	12.3	13.1	12.5
Avg Gain (dBi)	8.5	13.0	13.3	11.9	12.6	11.8
Horizontal beamwidth	57	26	24	38	30	20
Vertical beamwidth	57	26	24	37	29	20
Avg VSWR	<2:1	<2:1	<2:1	<2:1	<2:1	<2:1
Front-to-back (dB)	15	26	30	24	27	27
Max Power (per port)	25W					0.2W
Isolation (typ. dB)	25					
PIM, 3rd Order (dBc)	<-153			N/A		



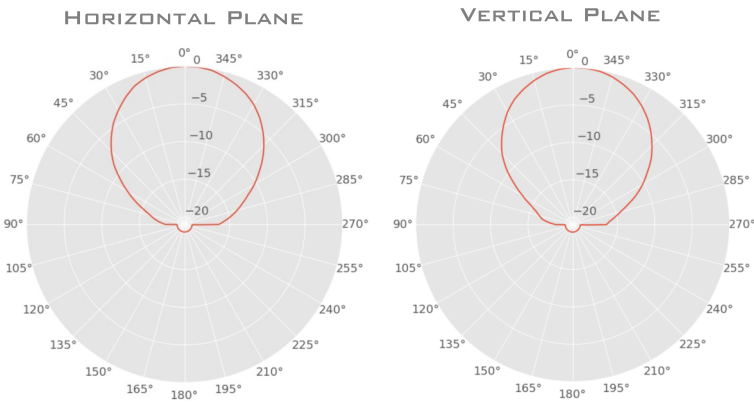
OTHER SPECIFICATIONS

Part Number	SYMSPV01
Impedance	50 Ω
Polarization	Dual +/-45
Antenna Weight	6 lbs (2.7 kg)
Antenna Height x Width	13" x 13"
Antenna Depth	15"
Input Connect.	2 X 4.3-10
Operating Temp.	-40°F to 130°F
Wind Survival	150 mph (241 km/h)
Radome Material	Kydex, UL94 V-0 rating
Color	White (Custom color available upon request)

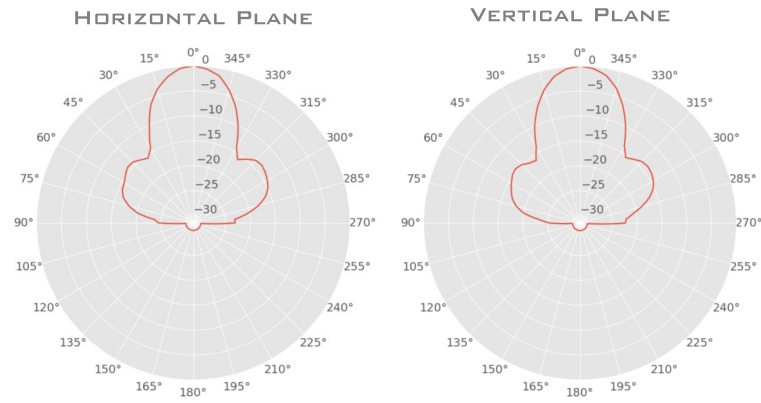
FOR INQUIRES, CONTACT US AT SALES@FRACTENNA.COM

ANTENNA POWER PATTERNS FOR COMMON FREQUENCIES

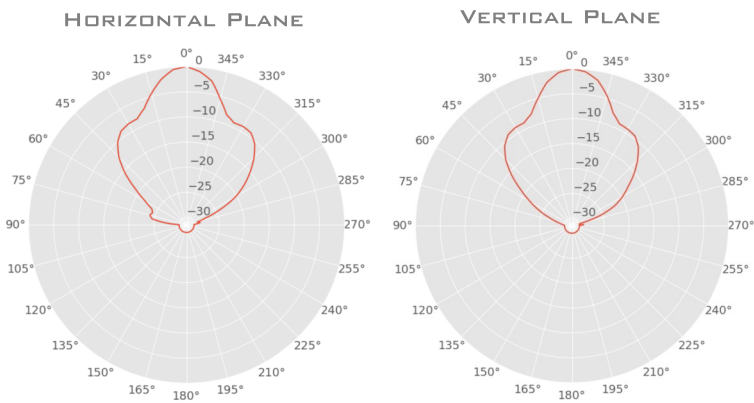
762 MHz



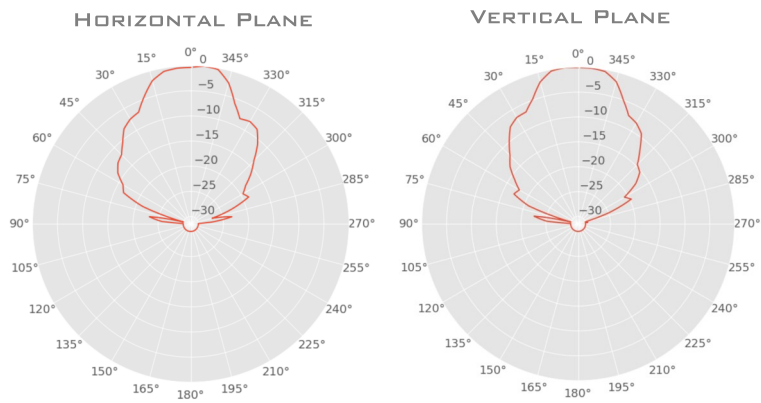
1761 MHz



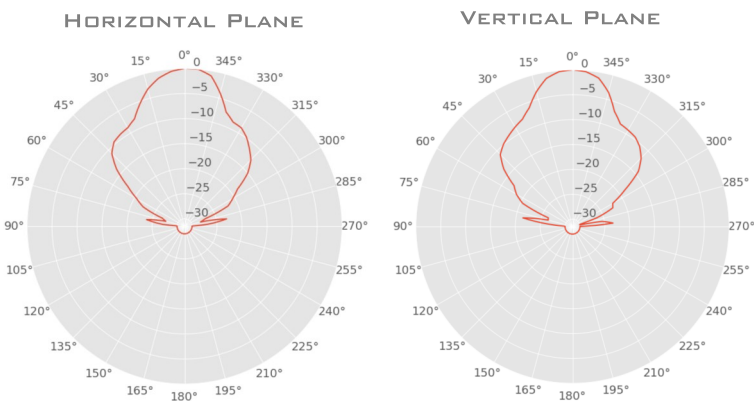
2166 MHz



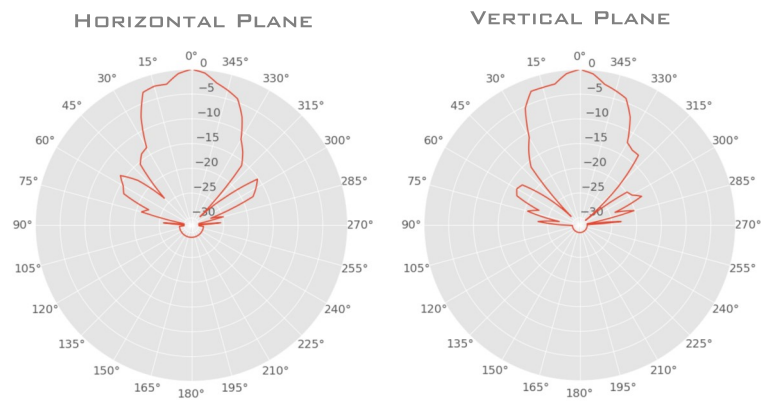
3678 MHz



3840 MHz



5595 MHz



ORDERING INFORMATION

Antenna part number	SYMSPV01		
Simulation files	Contact us at sales@fractenna.com for VEX or ATOLL file		
Color options	Custom color available upon request—may be subject to additional lead time		
Mounting bracket	Mounting bracket part number: SYMSPMB01		
	<div>WALL MOUNT</div> 	<div>POLE MOUNT</div> 	<i>Additional mount information on next page</i>

AND

*Additional mount
information on
next page*

MOUNTING BRACKET COMPONENTS

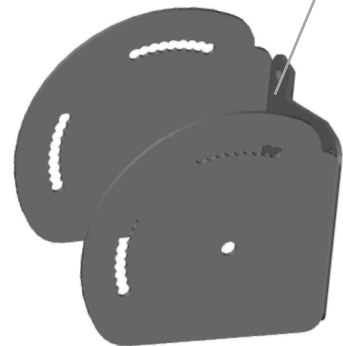
1. ANTENNA MOUNT



2. ROTATION INSERT



3. WALL/POLE MOUNT

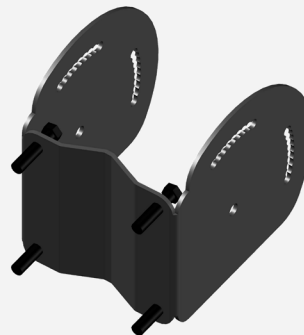


ANTENNA MOUNTING



- ◇ MOUNT ANTENNA BACK PLATE TO MOUNT COMPONENT 1.
- ◇ ROTATE ANTENNA TO PREFERRED MOUNT POSITION AND TIGHTEN BOLTS

MOUNTING TO WALL/POLE



- ◇ COMPONENT 3 ENABLES BOTH POLE AND WALL MOUNTING APPLICATIONS
- ◇ USE STANDARD BOLTS FOR WALL MOUNTING
- ◇ OR U-BOLTS TO MOUNT TO POLE (2-4" DIAMETER)

MOUNTING BRACKET INFORMATION

Mount part number	SYMSPMB01
Material	1/8" Carbon steel
Hardware	Included with mount
Color	Black
Mounting style	Pole Mount (fits 2"-4" OD) or Wall Mount
Dimensions (full assembly)	H: 7.5" ; W: 6.5" ; L:12"
Tilt	Vertical: +/- 30° ; Horizontal: +/- 60°
Rotation	+/- 25°